

Welcome to Turku School of Economics

“A Great place to think ahead!”

*Only he who keeps his eye fixed on the far
horizon will find the right road.
- Dag Hammarskjöld*

Mission, vision and values: For the future. TSE.



Our mission is to create and share internationally high-quality intellectual contributions based on both theoretical and applied research, drawing on discipline-based as well as interdisciplinary scholarship. Grounded in our knowledge creation, we educate responsible future leaders for national and international businesses and public sector.

In our vision, we are internationally widely recognized for high-quality research, inspiring learning experiences, and impactful collaboration with our stakeholders. We aim to be a leading knowledge partner regarding foresight and within our selected areas of strength in business disciplines and economics.

Values: We follow a critical and ethical scientific approach, which supports creativity and openness. Our mindset is entrepreneurial, locally global, and future-oriented. Our students, faculty and staff are enthusiastic about their work and aim to excel in all activities. We are **"A Great Place to Think Ahead"**.

Strategic objectives

- To further integrate **responsibility** into our curriculum and research agendas
- To make **foresight** an integral part of our activities

*The future is not predictable,
nor is it predestined.
Future outcomes can be influenced by individual
choices.*

- Roy Amara (The Futurist, 1981)



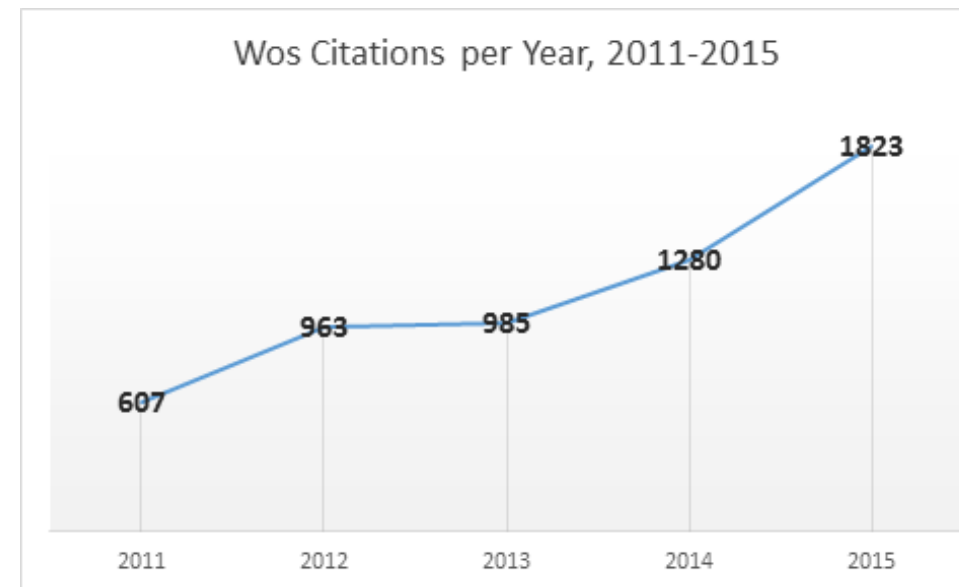
Focus areas of expertise

- Entrepreneurship
- Management control
- Networks in business
- Economic policy and markets

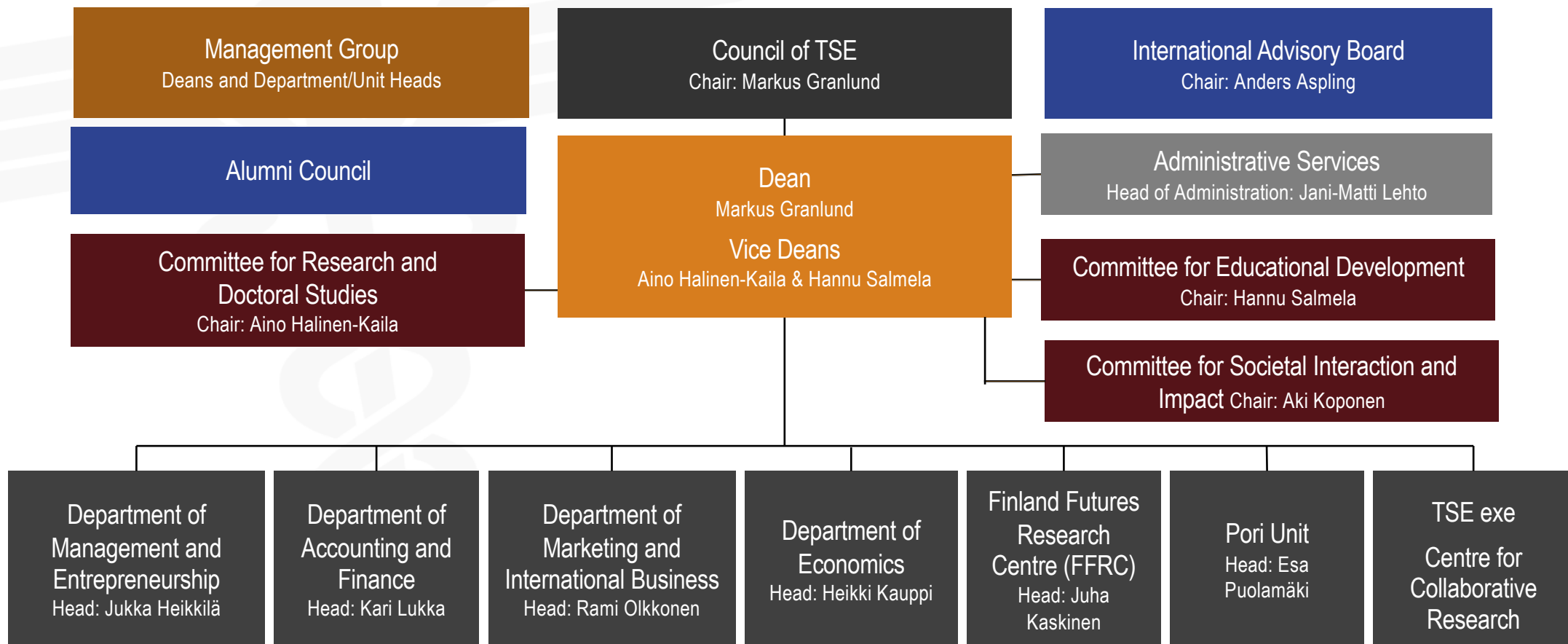


Research output in 2015 (2014)

- Refereed journal articles: **160 (132)**
- Books, book sections, other intl. research publications: **43 (38)**
- Accepted papers at peer-reviewed conferences: **59 (134)**
- Other publications: **342 (204)**
- Increase of WoS citations 2009-2015 +400%



Organization of TSE



Students

- Over 4000 applicants, about 10 % accepted
 - The most popular business school in Finland counted by the total number of applications (candidates have to choose top targets)
- ~ 3000 Bachelor's and Master's students
- ~ 200 Doctoral students
- ~ 150 international exchange students at TSE
- ~ 200 students abroad in foreign exchange programmes
 - Co-operation with more than 80 universities in appr. 40 countries
- Feedback from graduates (BSc, MSc, eMBA) very good



Degrees

	2013	2014	2015
Bachelors	280	297	398
Masters	314	338	349
Doctors	16	15	13

- Bachelor of Science (Econ. and Bus. Adm.), Bachelor of Social Science
- Master of Science (Econ. and Bus. Adm.), Master of Social Science
- Doctor of Science (Econ. and Bus. Adm.), Doctor of Philosophy, Doctor of Social Science



International programmes

Five international Master's Degree Programmes

- Global Innovation Management (GIM)
- Futures Studies (FUTU)
- International Master in Management of IT (IMMIT; triple degree)
 - with University of Marseille and Tilburg University
- Global Information Technology Management (GITM; double degree)
 - DEMA with Passau University
 - ITEM with University of Tilburg
 - BIKMA with Central China Normal University
- Executive MBA



Interaction with the society

- A lot of co-operation in research and teaching with
 - local businesses
 - global businesses
 - public sector organizations
 - third sector organizations
- Students involved in many different ways
 - Get Listed
 - Choose Your Future: won the Global Digital Challenge competition by Facebook and the US Ministry of Foreign affairs → start-up
 - Innovation Camp
 - Boost Turku...



University as an Agora

- Interest and enthusiasm
- Quality (processes and outputs)
- Studying is the work of the student
- From "random/coerced" studying towards **interactive studying through genuine presence**
 - When this works, it is truly rewarding for all parties
- **Bravely different TSE: emphasizing dialogue and true presence**
 - Strategic choice, a profiling competitive advantage

Contact



Postal address

- Turku School of Economics
- FI-20014 TURUN YLIOPISTO
FINLAND

Visiting address

- Rehtorinpellonkatu 3
20500 TURKU

Telephone

- +358 2 333 51

Pori Unit

- Pohjoisranta 11 A (P. O. Box 170)
- FI-28101 Pori, Finland

Telephone

- +358 2 333 51

www.utu.fi/tse